



ISO 9001•ISO 14001•OSAS 18001•ISO 13006 Certified



An Innovated  
technology  
rediscovered

**4K**  
COLLECTION

*Sugar* FINISH  
1200x600mm

**PARKER TILES PVT. LTD.**

**CORPORATE OFFICE:**

702, Iscon Elegance, S.G. Highway, Ahmedabad 380 015, Gujarat, India.  
Ph.: +91 90999 05252 / 05353 | Fax: +91 79 6616 8989

**DISPLAY SHOWROOM:**

107 - 108, Oreva Land Mark, Nr. Shiv Ajanta Hotel,  
Morbi 363 646, Gujarat, India Ph.: +91 90999 88251

**MANUFACTURING UNIT:**

Surendranagar - Rajkot highway, Opp. Jasapar Bus Stop,  
Nr. Muli Village 363 510, Gujarat, India. Ph.: +91 2756 233 185, 90999 93848

Email: [info@soltiles.in](mailto:info@soltiles.in)

[www.soltiles.in](http://www.soltiles.in)





# what is 4K?

One higher level of clearer printing quality that is the next step after ultra high definition printing quality is 4K technology printing. Manufactured in high resolution pixels of 4000, this technology has been introduced by 'Sol Tiles' with the monopoly in the field as the most modern era product for sharper and clearer printing on tiles with real, natural and micro fine details.

Our R&D department has dedicatedly worked upon the printing quality to set up the highest level in printing by inventing the newer and better standards than the highest standard available in the market today. Its sincere efforts have competently retreated today's tiles world with profound quality of printing. We are skillfully launching the two premium ranges in tiles with 4K printing named Super Crystal, Sugar Finish.

By launching the 4K printing technology 'Sol Tiles' has made its name worthily meaningful.



ROTARY PRINT



DIGITAL PRINT



4K PRINT

SOL Tiles – an offshoot of Parker Tiles was established to introduce novel ceramic tiling solutions in the industry. A company firmly established on the values of professional excellence, design quality and transparent functions, SOL Tiles has its soul set in heralding new tiling trends that suit the need of the industry with keeping comfort, practicability and space utilization in mind.

Bringing years of experience and expertise in to the practice and with smart amalgamation of creativity and technology, SOL Tiles churns collections that are always in vogue. More than tiles they are artistic representations that fulfill the designing desires of the customers. Products that take form after comprehensive R & D backed by stringent quality processes, tiling solutions from SOL Tiles can compete with international brands of Italy and Spain.

An eco-conscious company at the heart, the company takes great care in maintaining nature's equilibrium and adopts un-polluting practices. Also dedicated towards maintaining best relationship with both clients and employees, SOL Tiles work with highest integrity and transparency at every level.







## Mission

We firmly believe in continual processes and product innovation to deliver the best of ceramic tiles with fine aesthetic qualities and durability. We have established innovation, integration and excellence as our fundamental principles; in other words, a dynamic geared towards continual improvement within the framework of sustainable growth.



## Vision

Leveraging its vast accumulated experience, the company has set its sight on becoming an integrated provider of aesthetic and quality ceramic tiles to customers around the world. SOL believes in continues renewal to realize its mission of becoming the ceramic company of choice for customers worldwide. We strive to achieve a consolidated, sustained and independent growth on an international basis that ensures long- term business success. Our state-of-the-art ceramic tiles are the result of clear vision, backed by definite plans and confidence over out technically sound staff; thereby we are continually meliorating the position of our company and spreading luxury in people's lives.



## Quality Policies

We constantly strive to achieve the highest possible standards in our day-to-day work and in the quality of the goods and services we provide through innovation technology and meaningful human resource development. It is through our high-standard quality management system; we assure that our customers get nothing but the best of our products and services.



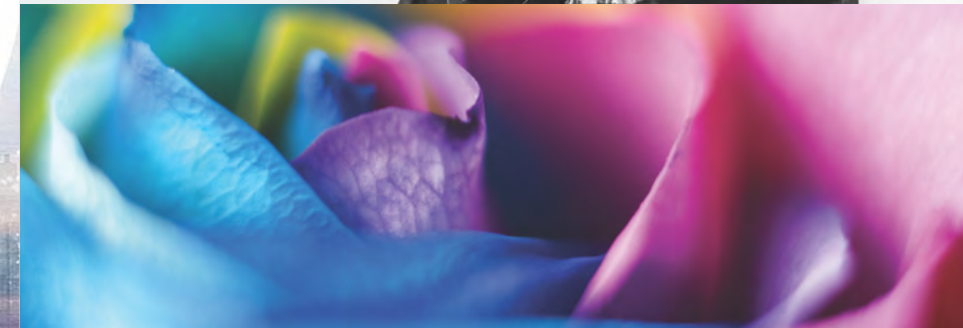
4K Digital

To impart the most accurate and aesthetically superior results to the tiles, SOL Tiles have adopted an all new 4K Digital Printing Technology. Bringing innovation to life for life like printing results on tiles, 4K Digital Printing technology is a revolutionary way to get more attractive and perfect effect on tiles.



High Strength

SOL Tiles promises beauty and elegance to your spaces for the lifetime as tiles of the portfolio comes with impeccable strength and toughness.



Multiple Application

With envious portfolio comprising the widest range of designs, SOL offers solutions for every space and place. From regular size to biggest ever size SOL Tiles offers various size options to fit in to ever dream project.



Eco Friendly

We believe in growing naturally and thus we put every practice in action to make sure nature's equilibrium is not disturbed. SOL is an environment conscious company and thus follows eco-friendly processes at every step.



Zero Maintenance

SOL Tiles are made at state of the art manufacturing set up with stringent quality control measures backed by extensive R & D ensuring products that keep the spaces cheerful and beautiful for the long time without any worry of maintenance.





*Sugar* FINISH  
| 200x  
600mm



**4K**  
COLLECTION

**SOL**  
SPREADING LUXURY





*Sugar* FINISH

1200x  
600mm

A compilation of nature with perfect design that has uniqueness in its collection. This collection is refined with endless boundaries of art and candidness.



1200x600mm SUGAR FINISH



ARBES GREY



ARBES BLACK



ARBES BEIGE



ARBES BROWN



Let the feast of colours  
spread the joy of beauty.

- 4K Digital
- High Strength
- Multiple Applications
- Eco Friendly
- Zero Maintenance



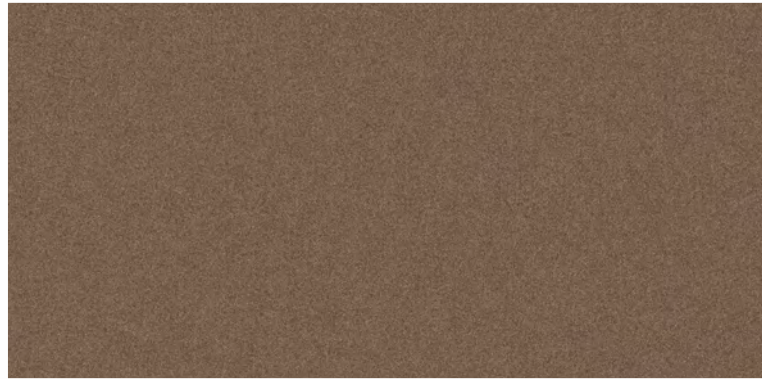
- 4K Digital
- High Strength
- Multiple Applications
- Eco Friendly
- Zero Maintenance



1200x600mm SUGAR FINISH



ARENA BEIGE



ARENA BROWN



AUSTIN CHOCO



ARENA BLACK



Spaces that invite the aura of happiness and liveliness.





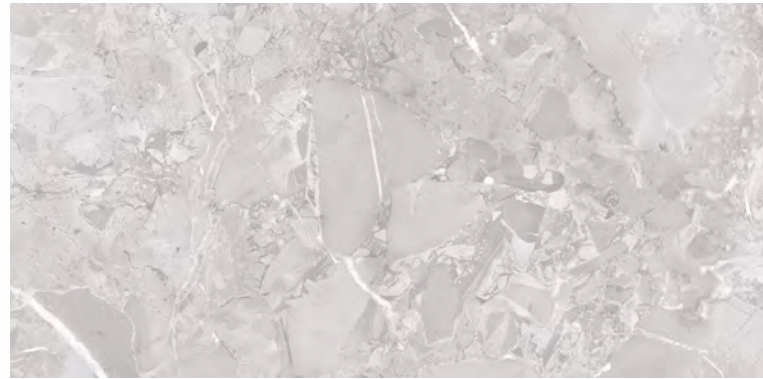
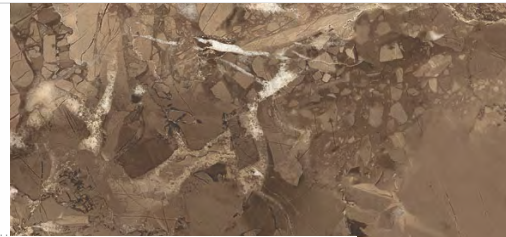
1200x600mm SUGAR FINISH



BIG STONE BEIGE



BIG STONE BROWN



BIG STONE BIANCO



BIG STONE BLACK



Let there be enchanting views for the eternity.



4K Digital



High Strength



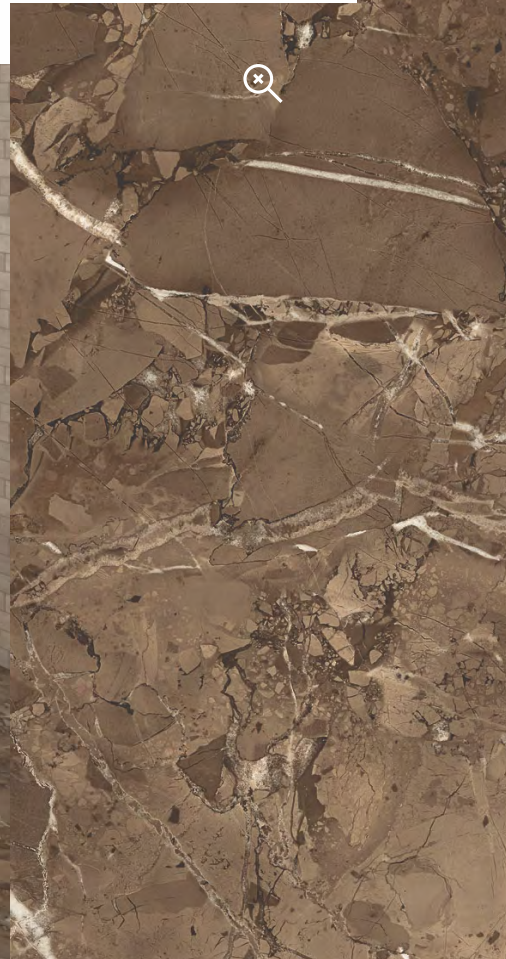
Multiple Applications



Eco Friendly



Zero Maintenance



4K Digital



High Strength



Multiple Applications



Eco Friendly



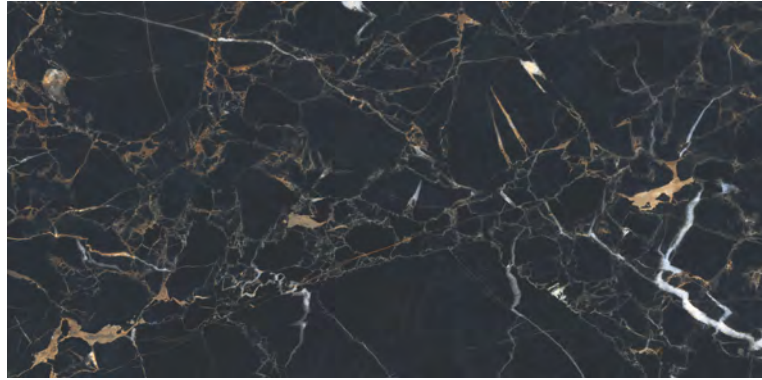
Zero Maintenance



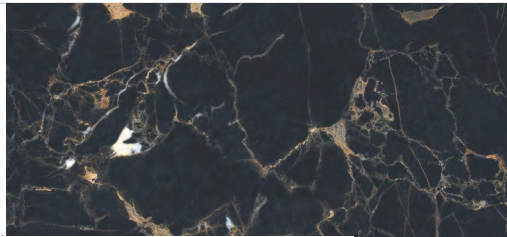
1200x600mm SUGAR FINISH



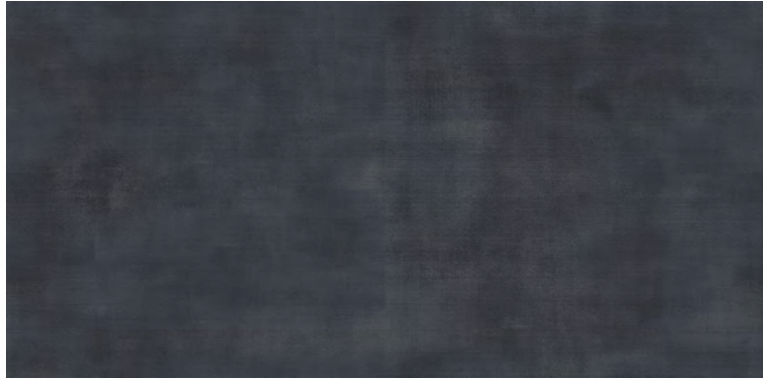
JERICO BIANCO



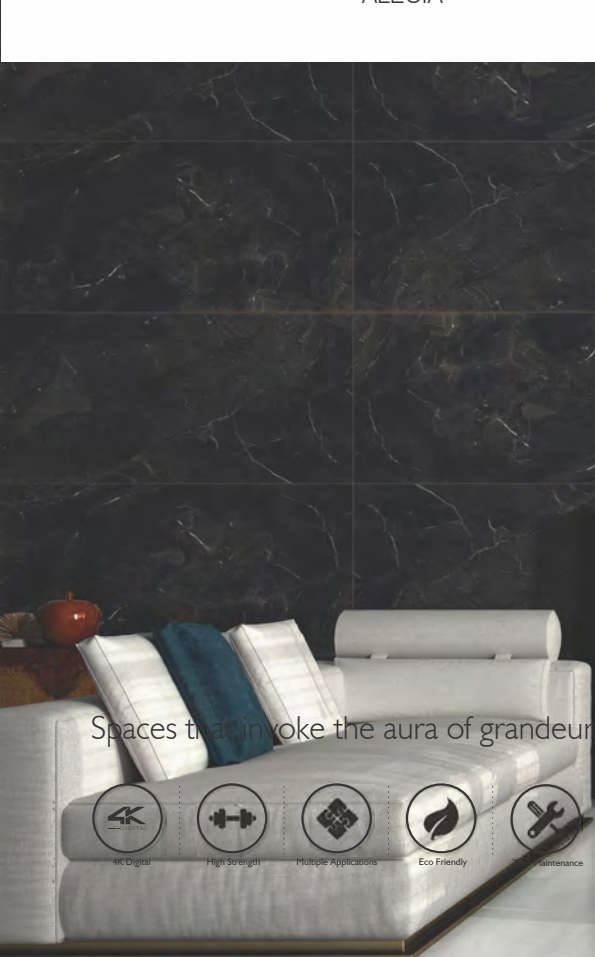
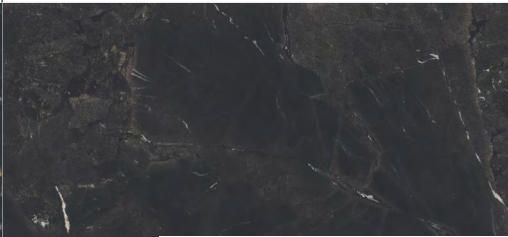
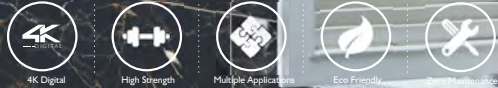
ITALINO BRUNO



ALECIA



SODA BLACK



Spaces that invoke the aura of grandeur





1200x600mm SUGAR FINISH



ETESIO LIGHT BLUE



ETESIO BLUE



ETESIO LIGHT



ETESIO DUSKY



Crystalline beauty bedazzling many

- 4K Digital
- High Strength
- Multiple Applications
- Eco Friendly
- Zero Maintenance



- 4K Digital
- High Strength
- Multiple Applications
- Eco Friendly
- Zero Maintenance



1200x600mm SUGAR FINISH



NARANJA CREAMA



NARANJA ASH



NARANJA BEIGE



NARANJA COPPER



Let your ambience epitomize elegance.





1200x600mm SUGAR FINISH



NARANJA STEEL



NARANJA MOCA



HAMMER STONE BROWN



HAMMER STONE BEIGE



- 4K Digital
- High Strength
- Multiple Applications
- Eco Friendly
- Zero Maintenance

- 4K Digital
- High Strength
- Multiple Applications
- Eco Friendly
- Zero Maintenance



1200x600mm SUGAR FINISH



Come...feel the splendour around you.



ARTEC BIANCO



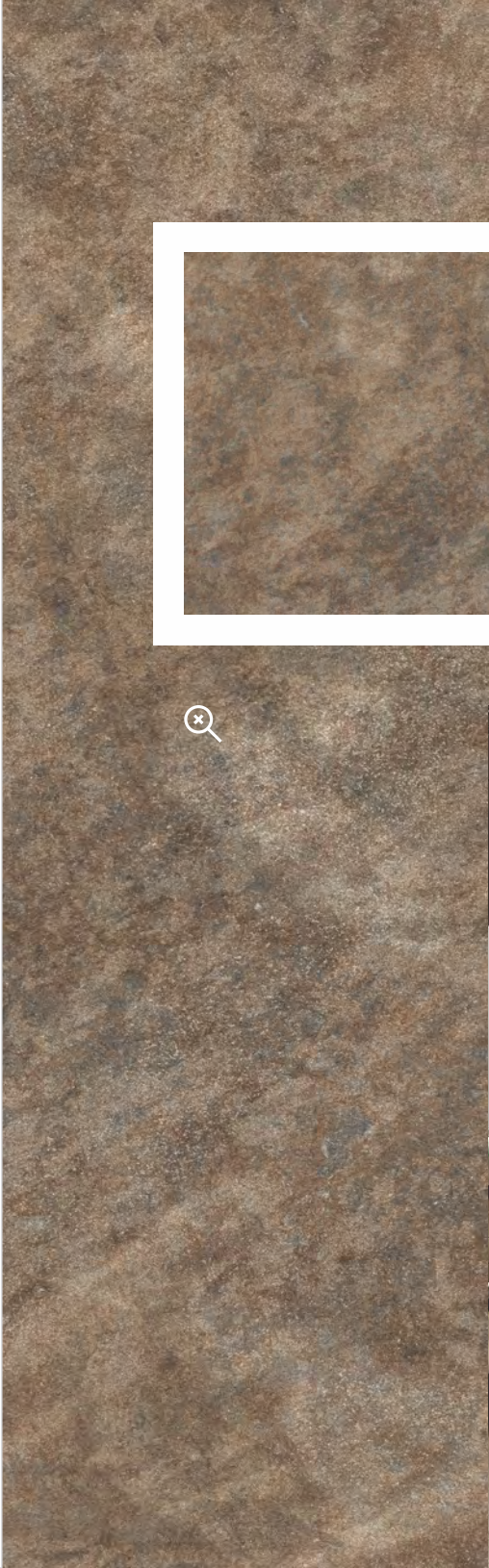
ARTEC GRIS



ARTEC BROWN



ARTEC BEIGE





1200x600mm SUGAR FINISH



DUOMO BLACK



DUOMO BIANCO



DUOMO BEIGE



DUOMO BROWN



Style your spaces with  
aesthetic impression of beauty.

- 4K Digital
- High Strength
- Multiple Applications
- Eco Friendly
- Zero Maintenance



- 4K Digital
- High Strength
- Multiple Applications
- Eco Friendly
- Zero Maintenance



1200x600mm SUGAR FINISH



HARDOX CROME



HARDOX BEIGE



HARDOX GREY



HARDOX CREMA



Breathing Life To Spaces





1200x600mm SUGAR FINISH



PINATO ROSE



ARTEC COTTO



DORATO GREEN



DORATO GREY



Style your spaces with  
aesthetic impression of beauty.

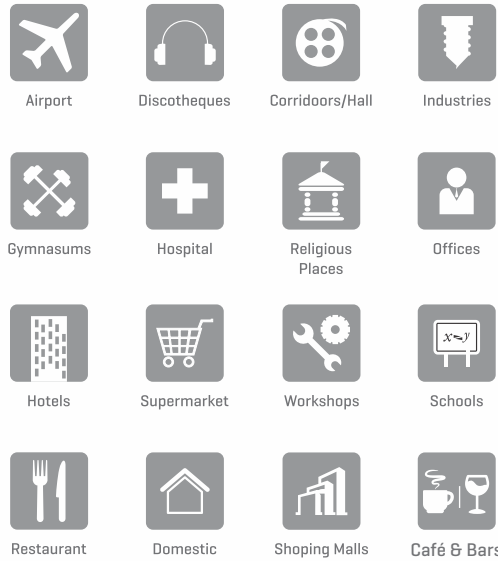




TECHNICAL SPECIFICATION OF SOL TILES

CHARACTERISTIC	STANDARD AS PER ISO-13006/EN14411 GROUP	MEAN VALUE OF SOL GVT	TEST METHOD
REGULATORY PROPERTIES			
Deviation in length & width	± 0.5 %	± 0.1 %	ISO-10545-2
Deviation in thickness	± 5.0 %	± 4.0 %	ISO-10545-2
Straightness in side	± 0.5 %	± 0.1%	ISO-10545-2
Rectangularity	± 0.5 %	± 0.1%	ISO-10545-2
Surface flatness	± 0.5 %	± 0.1 %	ISO-10545-2
Color difference	Unaltered	No change	ISO-10545-16
Glossiness	As per mfg	Min 90	GLOSSOMETER
STRUCTURAL PROPERTIES			
Water absorption	≤ 0.50 %	≤ 0.50 %	ISO-10545-3
Apparent density	> 2.0 g/cc	> 2.0 g/cc	DIN 51082
MASSIVE MECHANICAL PROPERTIES			
Modulus of rupture	Min. 35 N/mm2	Min. 40 N/mm2	ISO-10545-4
Breaking strength	Min. 1300 N	Min. 2000 N	ISO-10545-4
Impact resistance	As per mfg	Min. 0.55	ISO-10545-5
SURFACE MECHANICAL PROPERTIES			
Surface Abrasion Resistance	As per mfg	Min. Class-4	ISO-10545-7
MOH's Hardness	As per mfg	Min. 5	EN 101
THERMO HYGROMETRIC PROPERTIES			
Frost resistance	No damage	No damage	ISO-10545-12
Thermal shock resistance	No damage	No damage	ISO-10545-9
Moisture expansion	Nil	Nil	ISO-10545-10
Thermal expansion (COE)	Max. 9.0x10.6	Max. 6.5x10 <sup>6</sup>	ISO-10545-8
Crazing resistance	As per mfg	Min. 10 Cycle	ISO-10545-11
CHEMICAL PROPERTIES			
Chemical resistance	No damage	No damage	ISO-10545-13
Stain resistance	Resistant	Resistant	ISO-10545-14
SAFETY PROPERTIES			
Slip resistance	As per mfg	>0.40	ISO-10545-17
Fire resistance	As per mfg	Fireproof	N.A
Lead & Cadmium given off by glazed tiles	As per mfg	Dous not yield Pb & Cd	ISO-10545-15

APPLICATIONS



MAINTENACE GUIDELINES FOR PGVT

STAINS (CREATED BY)	SOLVENTS (TURPENTINE, ACETONE TRICHLOROETHYLENE, ETC.)	SODIUM HYPO CHLORIDE (NaOCl)	ACIDS (HYDROCHLORIC ACID*)	ALKALI (SODIUM HYDROXIDE/ POTASSIUM HYDROXIDE)
BEVERAGES BEER				✓
JUICES		✓		
COLA				✓
COFFEE				✓
TEA	✓	✓		
INK BALL/FELT PEN	✓			
LIQUID INK	✓		✓	
MARKER INK	✓			
MISCELLANEOUS CEMENT			✓	
TAR	✓			
CALCAR			✓	
EDIBLE OIL	✓			
CIGARETTE			✓	
GLUE	✓			✓
ICE CREAM				✓
PAINTS	✓		✓	
RESINS	✓			
RUST			✓	
BLOOD				✓

\*Commercial grade acid & solvents should not be used.

PACKING DETAILS

SR.NO	PRODUCT	NOMINAL SIZE BOX	THICKNESS	NO. OF TILES PER BOX	COVERAGE AREA
1	VITRIFIED TILES	1200X600MM	12 mm	2 PCS.	1.44 SQ. MTR.
2	VITRIFIED TILES	600X600MM	9 mm	4 PCS.	1.44 SQ. MTR.

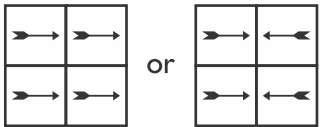
**NOTE:** Colour Shown are as accurate as the limitations of the printing process will allow. Prospective Customer are advised to inspect a sample of tiles before ordering. every effort has been made to ensure the accuracy of the information given. However, the Company research the right to change the specifications Without prior notice. Sometimes variations in shade or size being inherent to ceramic industry may occur. Before fixing, we advice you to follow the fixing Instruction on the cartons of the tiles as no responsibility can be accepted by the once the tiles have been fixed.



TILE FIXING INSTRUCTIONS

- Plaster the surface of the floor where the tiles will be laid with smooth finish and complete the plastering and curing at least two weeks prior to laying.
- Before fixing SOL tiles, lay them out in the desired pattern and make sure That they give an acceptable blend of colour. Please note that certain amount of shade variation is inherent in the manufacture of fully vitrified ceramic tiles. THE COMPANY WILL BEAR NO LIABILITY AFTER THE TILES ARE FIXED.
- The company bears no responsibility towards the tiles exposed to any outside process like transfers, printing, firing etc.
- For fixing SOL, we recommend the use of tile fixing adhesives for best results. Also follow the fixing instructions provided along with the adhesives.
- For fixing SOL tiles on the floor, using sand and cement, follow the instructions given below:  
(a) use cement and sand mortar in the ratio of 1:4, Add some water to create a consistent paste.  
(b) Once the mixing has completed do not add any further water and use the same within one hour.  
(c) Apply a 20-30 mm, layer of bedding material over an area of 1 square meter at a time on the surface of the area. Apply a fine slurry to the back of the tile to ensure proper and full bedding. Press gently for even adherence at the back of the tile. DO NOT USE AN IRON HAMMER OR SOME HEAVY MATERIAL TO PRESS THE TILE.
- For fixing SOL tiles on Dado, we recommend the use of tile fixing adhesive with proper troweling method for 100 per cent coverage behind the tiles and for peerless bonding. Please follow the manufacturer's instructions for the same. We do not recommend the use of sand and cement for fixing on Dado.
- Make and lay out the tiles from the center of the area to be laid so that cut tiles, if any, will be on the outer edges towards the walls.
- The work size which we try to maintain for better technical performance is 600 x 600mm, 800 x 800mm, 600 x 1200mm on average. It is advisable to maintain a gap of 1 mm to 2 mm between every two tiles to allow for possible expansion as per BIS/EN tolerance norms.
- Complete the laying process by pressing the cut SOL tiles firmly into place along the wall/floors.
- Allow 3-4 days for bed curing. After this period fill the joints with grouts. Usage of grout sealant is recommended for keeping the grout free of dust.
- Fifteen minutes after finishing the grouting process, wipe off excess grout with a damp sponge and polish the tiles with a soft and dry cloth for a clean surface. The tiles can also be cleaned with a mild acid (However, Hydrofluoric acid and its derivatives should not be used).
- Please note that the company does not accept any liability un case of problems arising out of non-adherence these fixing instructions.

Kindly look for the arrow (→→) on the back of the tile and follow the laying pattern as shown in Pic-1:







## NETWORK

SOL is geared to make its presence felt everywhere. Be it on domestic front or on international markets, it is our aim to take the extraordinary range everywhere. With determined endeavors we are slowly but steadily making foray everywhere and expanding our reach. Currently, SOL is handling its nationwide and worldwide dealers and distributors network through offices in Ahmedabad, Gujarat and Dubai respectively. Best quality products with

## Contact Us

Business Development Manager (South India) : +91 90999 72960

Zonal Manager (North East India) : +91 99090 07530

Area Sales Manager (Kerala) : +91 99617 36735

Regional Sales Manager (Upper North India) : +91 70877 91369

Area Sales Manager (East India) : +91 97485 16772

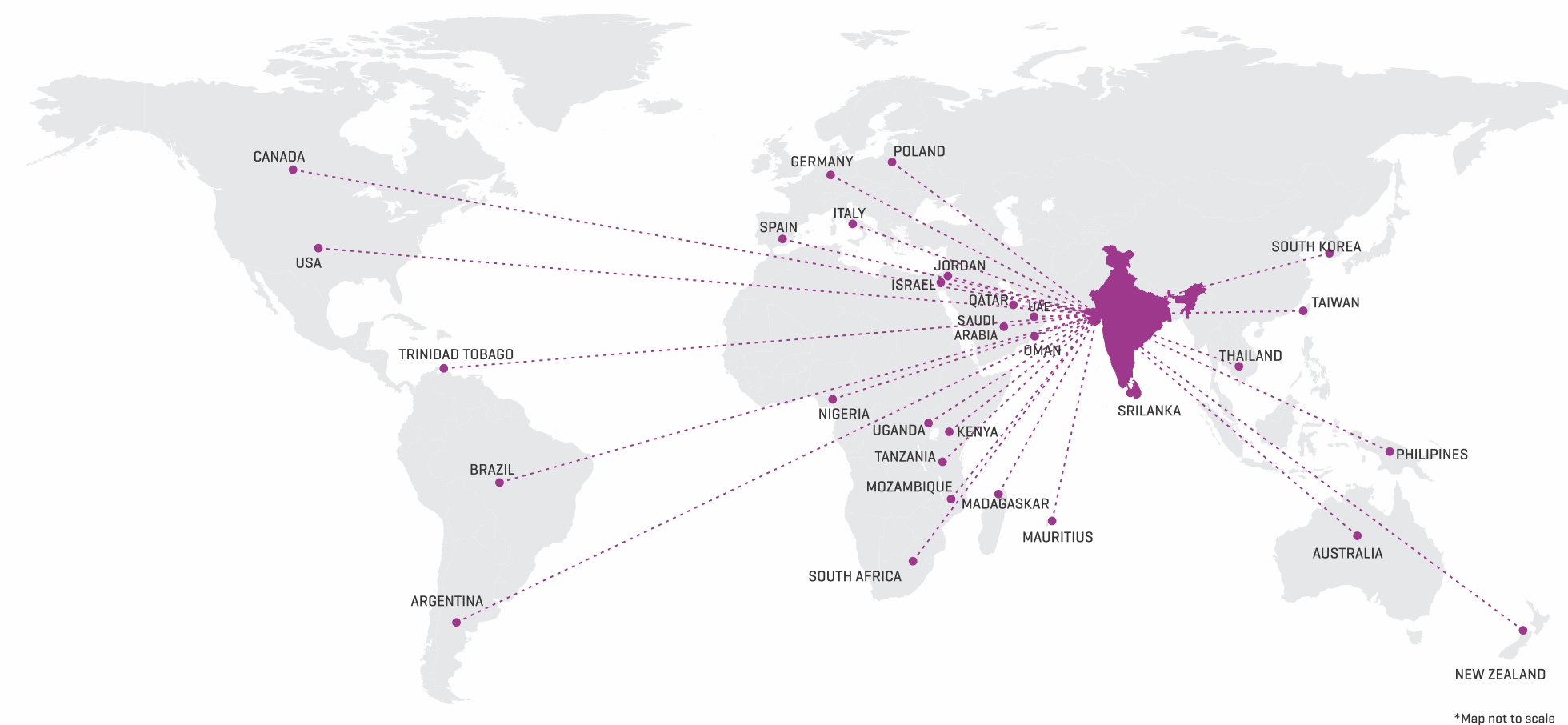
Regional Sales Manger (Eastern U.P.) : +91 90990 01596

Area Sales Manager (Eastern U.P.) : +91 90990 03406

Area Sales Manager (Eastern U.P.) : +91 90990 04637

Area Sales Manager (Maharashtra - Vidarbha) : +91 97648 55500

## SPREADING LUXURY ACROSS THE WORLD



## INTERNATIONAL OFFICES

### UAE

Post Box #150742, Sharjah,  
The United Arab Emirates  
Ph. : +97150 2605897, 6560563  
Email : [vp.uae@soltiles.in](mailto:vp.uae@soltiles.in), [gm.uae@soltiles.in](mailto:gm.uae@soltiles.in)

### UK

246, Bevelly Drive, Queens Burry, HA 85NB, London, England.  
Ph.: +44-77609 99620  
Email : [uk@soltiles.in](mailto:uk@soltiles.in)

### AUSTRALIA

44, Claremount Avenue, Greenacre, NSW 2190, Australia.  
Ph.: +65-96707440  
Email : [aus@soltiles.in](mailto:aus@soltiles.in)

### KENYA

Off. Enterprise Road, Ind. Area, P.O. Box - 18583-00500, Kenya  
Ph. : +254 20 6651164  
Email : [kenya@soltiles.in](mailto:kenya@soltiles.in)

### HONGKONG

17 D, 3 Victoria Tower, 188 Canton Roadm Tsimshatsui,  
Kowloom, Hongkong  
Email : [hk@soltiles.in](mailto:hk@soltiles.in)

### SINGAPORE

Block No. 109, Lengkong Tiga, Singapore.  
Ph.: +65-96707440  
Email : [sg@soltiles.in](mailto:sg@soltiles.in)

### SOUTH AFRICA

Cramond Road, Campsbay,  
Cape Town, South Africa, 8005  
Email : [sa@soltiles.in](mailto:sa@soltiles.in)